



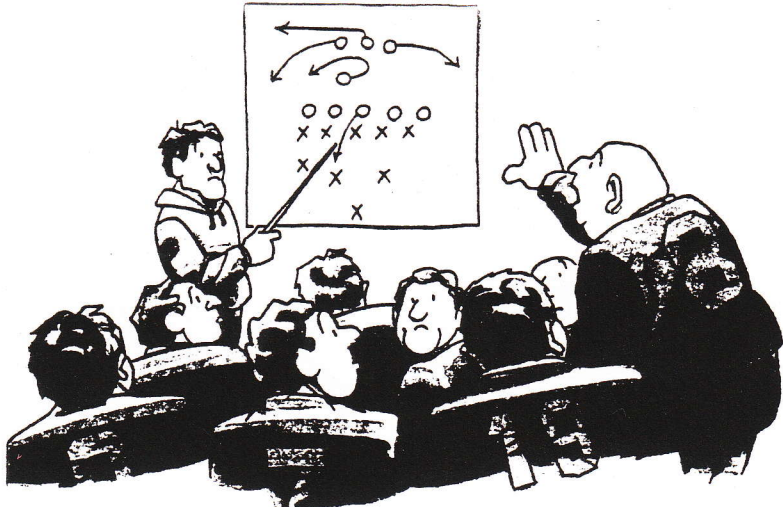
1993 SEASON

FINAL "BLUE DUKES" STATISTICS

RUSHING	YR	ATTEMPTS	YARDS	AVE.
SAM ELLIOTT	12	147	789	5.4
JAKE FISHER	12	78	439	5.6
ALLEN SMALLING	11	50	292	5.8
QUENTEN BROWN	12	24	102	4.3
JASON WISNIEWSKI	12	35	83	2.4
MIKE KRUEGER	11	12	59	4.9
TODD MILLER	12	15	32	2.1
JAY VALERIO	10	3	17	5.7
DEREK HEIT	11	7	9	1.3
ADAM ZOLTACHA	11	1	7	7.0
BRITT BUCKLEY	11	3	4	1.3
ANDY WITTMANN	11	14	- 6	-0.4
OTHERS		5	13	2.4
		<hr/>	<hr/>	<hr/>
		394	1846	4.7

PASSING	YR	ATT.	COMP.	YDS.	TD	INT	%
JASON WISNIEWSKI	SR	84	39	490	4	3	46%
ANDY WITTMANN	JR	34	17	203	2	2	50%
SAM ELLIOTT	SR	4	1	26	0	1	25%
		<hr/>	<hr/>	<hr/>	<hr/>	<hr/>	<hr/>
		122	57	719	6	6	47%

RECEIVING	YR	NO.	YARDS	AVE.
JASON STEPHENS	12	26	297	11.4
JAKE FISHER	12	13	192	14.8
SAM ELLIOTT	12	9	117	13.0
JASON O'BRIEN	12	8	107	13.4
MIKE KRUEGER	11	1	6	6.0
		<hr/>	<hr/>	<hr/>
		57	719	12.6



"Hold it, Coach...Are we the hugs or the kisses?"

SCORING	YR	TD	1XP	2XP	FG	SAF.	TOTAL
SAM ELLIOTT	12	20					120
CHRIS CICHY	11		15		4		27
JAKE FISHER	12	2		1			14
QUENTEN BROWN	12	2					12
JASON STEPHENS	12	2					12
MATT DALY	11		8				8
JASON WISNIEWSKI	12	1					6
ALLEN SMALLING	11	1					6
MIKE KRUEGER	11	1					6
JAY VALERIO	11	1					6
						1	2
		30	23	1	4	1	219

PUNTING	YR	NO.	YDS	AVE	LONGEST
SAM ELLIOTT	12	39	1470	37.7	66

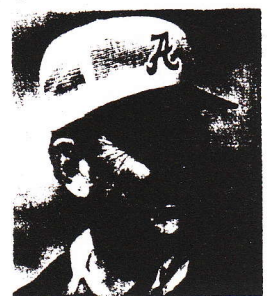
PUNT RETURN	YR	NO.	YDS.	AVE.
JAKE FISHER	12	29	231	8.0
SAM ELLIOTT	12	9	106	11.8

KICK OFF RETURN	YR	NO.	YDS.	AVE.
JAKE FISHER	12	9	182	20.2
RODNEY RICE	11	2	35	17.5
JASON STEPHENS	12	2	17	8.5
JASON O'BRIEN	12	2	0	0.0
TOM HAYDEN	11	1	24	24.0
SAM ELLIOTT	12	1	17	17.0
TIM JAGLINSKI	10	1	0	0.0

INTERCEPTIONS	YR	NO.	YDS.
JAKE FISHER	12	6	61
QUENTEN BROWN	12	2	34

"When you make a mistake, there are only three things you should ever do about it: 1- admit it, 2- learn from it and 3- don't repeat it."

Paul "Bear" Bryant





DUKES and OPPONENTS STATISTICS

TEAM OFFENSE	SCORE	RUSHING	PASSING	TOT. YDS.	FD
DUKES	13	134	27	161	12
Milw. WASHINGTON	6	50	145	195	5
DUKES	28	189	47	236	15
Shorewood	6	14	94	108	5
DUKES	30	271	53	324	17
Homestead	16	124	90	214	12
DUKES	20	129	40	169	6
Port Washington	7	61	109	170	9
DUKES	14	139	69	208	8
Mem. Falls	6	82	103	185	9
DUKES	28	300	104	404	16
Cedarburg	0	17	173	190	9
DUKES	41	329	30	359	20
Nicolet	0	119	3	122	3
DUKES	32	142	100	242	13
Grafton	7	-15	47	32	4
DUKES	0	57	151	208	16
Ger mantown	7	177	12	189	11
DUKES	13	156	98	254	11
Ashwaubenon	34	174	106	280	13

ALL 10 GAMES

DUKES	219	1846	719	2565	134
ave. per game	21.9	184.6	71.9	256.5	13.4
OPPONENTS	89	803	882	1685	80
ave. per game	8.9	80.3	88.2	168.5	8.0

NSC 7 GAMES

DUKES	165	1367	547	1914	96
ave. per game	23.6	195.3	78.1	273.4	13.7
OPPONENTS	43	565	537	1102	57
ave. per game	6.1	80.7	76.7	157.4	8.1